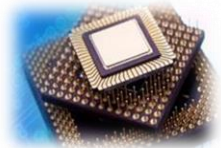


Company Profile

- Semiconductor Test & Embedded Technology Company
- Headquarters & Operations in India, Singapore, Malaysia
- Started in 2005: 12+ years & Sustaining Growth
- ISO 9001:2008 Certified
- Cost effective Offshore & Onsite solutions
- Focus on Long Term Values for all Stakeholders
- Turnkey Product & Service Support
- Serving Global Semiconductor Companies
- AlphaOmega Training Academy

Vision

Consistently excel in Semiconductor IC Test Engineering & Hardware Products with associated Embedded Solutions for global Customers



Mission

Exceed the fast emerging needs of our Customers by:

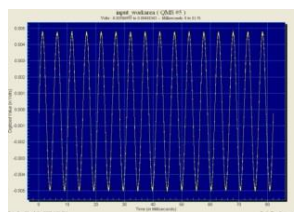
- Accelerating time-to-market thru continuous Innovation & high Quality
- Providing unparalleled Service that is Versatile & Cost-effective

Values

1. Business Ethics – defines us as a Company
2. Professionalism – defines us as Individuals
3. Citizenship – defines our contribution to society

Corporate Objectives

1. Profit – earnings that enable achieving other 4 objectives
2. Client Satisfaction
3. Competence
4. Employee Satisfaction
5. Growth



Business Units (BU)

1. Test Engineering
2. Hardware Products
3. Automation Solutions
4. Allied Services



(2) Hardware Products BU

- Low Cost Tri-Temp Handlers
- Universal Test Head Manipulators
- Handler Conversion Kits & Test Sockets
- PCB Design, Fabrication & Assembly
- Board Repair Services

(4) Allied Services

- Wafer Sort & Final Package Level Production Testing
- Proto-Type Samples Packaging & Small Volume production
- New Product Reliability Qualification
- ESD/Latch-up Qualification
- ATE Equipment Installation & Maintenance Support

Delivery Methods

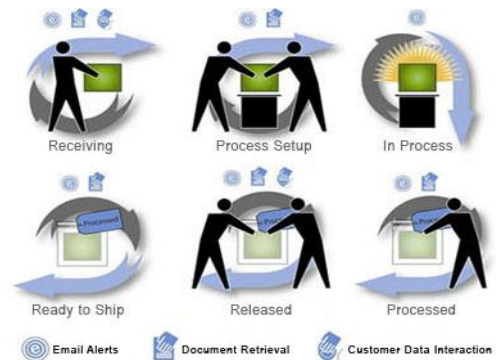
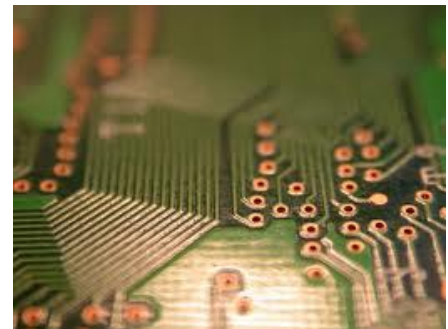
- Well defined Process Flow documents & Check-lists
- ISO Work Procedures and Standards
- Setting & Monitoring of Key Performance Indices
- Project Scheduling & Milestone Tracking
- Systems for Continuous Process Improvement
- Customer specific Qualification Process

(1) Test Engineering BU

- New Product Development
- Product & Test Engineering
- Program Conversion from Legacy platforms
- Manufacturing Support Services

(3) Automation Solutions BU

- Equipment & Process Automation
- Process Control Monitoring Systems
- Access Control & Security Systems
- Bench Instrumentation and Labview Automation



Quality Policy

“To consistently excel in Semiconductor Test Software and Hardware Solutions and exceed the fast emerging needs of our Customers through continuous innovation, high quality, accelerated, versatile & cost-effective services”



Customers

- Global Semiconductor Customer base
- Device & Equipment Manufacturers
- Markets Served - America, Asia Pacific & India
- Markets Explored – Europe, Japan
- Computing, Mobile & Consumer Applications
- Customer specific Dedicated Teams
- Inbuilt Long-term Partnership Model



Logistics

- Green Channel Status for Imports & Exports
- Zero Duty with Expedited Customs Clearance
- Convenient Logistics for Equipment Consignment
- Daily Connecting Flights to all Countries



Quality Methodology

- Quality Controlled Process flow approach
- Archival of Process records and Quality data
- Closely monitored Corrective Action Systems
- Road Map - ISO 9001:2015 Certification



Infrastructure

- 10K sq.ft Facility with fully furnished Office space
- Well Equipped Static Dissipative Flooring with ESD Controls
- Temperature & Humidity Controlled Environment
- Long term Partners for Supply Chain Management
- High Speed Internet Connectivity with Remote Accessibility



Professional Team

- Well Experienced Leadership
- 50+ Years Total Test Engineer Experience
- Qualified & Skilled Test Personnel
- Proficiency in Communicating in English
- Ready availability of Resources for expansion

Human Resources

- Recruitment of Talented Engineers from Reputed Institutions
- Continuous & Standardized Training Methodologies
- Periodical Performance Appraisal Review
- Employee Appreciation & Rewarding Schemes
- Performance based Long Term Career Growth Plans



Socio-Economic-Contribution (S-E-C)

- Volunteering one's time to improve society
- Phase 1: < 35 Years of Age – Focus on Career Building & Establishment
- Phase 2: 35 to 65 Years of Age – Ability to contribute to Economic Development
- Phase 3: >65 Years of Age – Ability to contribute to Social Causes
- S-E-C is to contribute socially in Phase 2 along with Economic Development
- 3 Areas identified to assist us in achieve this
 - Following discipline in any and everything we do
 - Providing a helping hand to people around us in any way we possibly can
 - Showing the right path forward to people around us



Value Proposition

- Cost Effective One Stop Turnkey Test Solutions
- Customer-wise Dedicated & Talented Team
- Unparalleled 24x7 Service throughout the year
- Proven Track Record with focus on long term values
- Cutting edge Hardware & Embedded Technologies
- Enhancing the Time to Market for new Products
- Closely held partnership model with all Stakeholders

